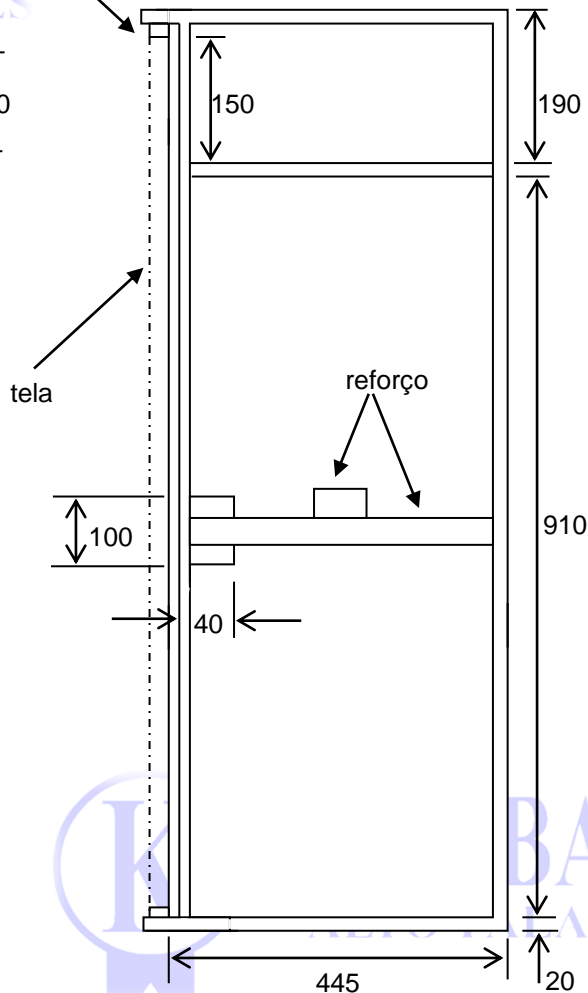


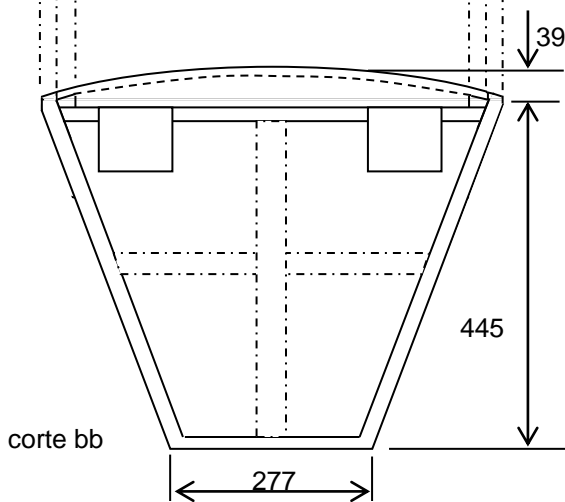
QUADRO PARA ENCAIXE DA TELA

cut aa



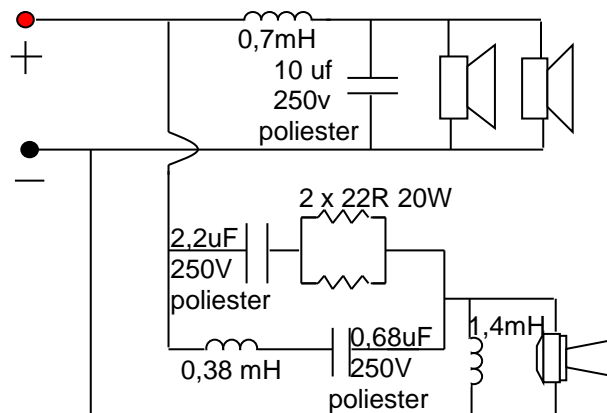
tela

reforço



cut bb

Sugestão de divisor de frequência 2 vias



Alto - falantes

02 - K15 - 169 st  
01 - KD 770 mh

usar compensado naval ou MDF  
de 20 mm de espessura.

|                |                    |                |
|----------------|--------------------|----------------|
| <b>KEYBASS</b> | DATA -             | 24 / 04 / 2002 |
| MODELO -       | <b>K MG 15 x 2</b> | TRAPEZOIDAL    |
| MEDIDAS - mm   | Vb = 120 litros    |                |

